

**ADVENT**<sup>®</sup>  
TOOLS LIMITED



**ADVENT**<sup>®</sup>  
**YOUR BRAND**



**THE PRODUCT GUIDE**  
EFFECTIVE 1ST JANUARY 2024

# OUR MISSION IS TO EXCITE, INNOVATE AND BE THE MEASURE OF CHANGE FOR A BETTER TOMORROW!

**WHO ARE WE...** Established in 1999, Advent Tools is a family business drawing on over 40 years of industry experience from our founder the late Michael Seal. Today Advent Tools is the **UK'S Number 1** supplier in branded Tape Measure's, Carpenters' Pencils, and Brickline.

**WHAT WE DO...** Advent delivers innovative **quality** products with a personal touch, **empowering** brands and customers to get the best job done.

These **five** simple steps show how easy it is:

## 5 SIMPLE STEPS:



Select the product that is right for your business



Send us your logo with any information you would like to include



Sit back whilst our creative team prepares your artwork



Approve your artwork



Allow around 7-10 days for delivery

## TAPE MEASURES

The Advent Master Precision	04
The Advent Vice Versa	06
The Advent Gap Tape	07
The Advent Non-Conductive Tape Measure	08
	09

Series 1	10
Series 2	12
Series 4 - 3m/10ft	14
Series 4 - 5m/16ft	16
Series 4 QUANTUM - 5m/16ft	18
Series 4 QUANTUM - 8m/26ft	20
Series 4 QUANTUM - 10m/33ft	22
Series 4 QUANTUM - Dual	24
Series 7	26
Hi-Vis	28
POS - Backing Cards	30
POS - Counter Display Tray	32
PowerBlade Key Ring	33
Long Fibreglass Tape Measure's	34
Long Steel Tape Measure's	35

## STEEL RULES

The Advent Steel Rules 150mm/6"- 300mm/12"	36
The Advent Steel Rules 600mm/24"-1000mm	38
	39

## PENCILS

Advent Universal Sharpeners 50's	40
Carpenters Pencils Wood / White Finish	42
Advent Carpenters Pencils Tub 10	43
Advent Hexagonal Pencils Tub 15	44
	45

## BRICK LINE

Advent Nylon Braided Hi Vis Brick Line	46
Your Brand Nylon Braided Hi Vis Brick Line	48
The Advent Reel Eazi Brick Line	49
	50







# ADVENT®

## Advent Master Precision

5m/16ft x 25mm Wide Blade



The Most Accurate Tape Measure You Can Buy!

# ADVENT®

## Advent Vice Versa

5m x 25mm Wide Blade

8m x 25mm Wide Blade



The Perfect Tape Measure For Left Handed Users!

### FEATURES

- Class I Accurate/ UKCA + CE Approved
- Metric & Imperial Blade Markings
- Ergonomic Soft Rubber Case
- Supplied On A Backing Card

- True Zero End Hook
- 3 Rivet End Hook
- ABS Plastic Case
- Thumb Lock



### FEATURES

- Class II Accurate/ UKCA + CE Approved
- Dual Reading/ Printed Blade
- Metric Only Blade Markings
- Blade Lock + Pause Button

- 3 Rivet Double End Hook
- Non-Reflective Blade
- Multi-Position Hook
- ABS Plastic Case



ITEM CODE	DESCRIPTION	MOQ
AMP-5025	Advent 5m/16ft x 25mm (Class 1) Master Precision Tape Measure	12



ITEM CODE	DESCRIPTION	MOQ
ATM4-5025VV	Advent 5m x 25mm (Metric Only) Dual Reading/ Printed Tape Measure	12
ATM4-8025VV	Advent 8m x 25mm (Metric Only) Dual Reading/ Printed Tape Measure	12



# ADVENT®

## Advent Gap Tape

5m/16ft x 25mm Wide Blade



The Perfect  
Tape Measure  
For internal  
measurements!

# ADVENT®

## Advent Non - Conductive

3m/10ft x 13mm Wide Blade



NO METAL  
COMPONENTS  
100% Safe For  
Electrical jobs!

### FEATURES

- Reverse Blade Markings For Internal Measuring
- Designed For Standard & Internal Measuring
- Class II Accurate/ UKCA + CE Approved
- Metric & Imperial Blade Markings
- 3 Rivet Double End Hook

Dual Printed Blade



### FEATURES

- FRP Blade Coated In Urethane Resin
- Metric & Imperial Blade Markings
- No Internal Metal Components
- Polycarbonate End Hook
- Multi-Position Hook

ABS Plastic Case  
Blade Lock



ITEM CODE	DESCRIPTION	MOQ
AGT-5025	Advent 5m/16ft x 25mm 2 in 1 Gap Tape Measure	12



ITEM CODE	DESCRIPTION	MOQ
NCTM-3013	Advent 3m/10ft x 13mm Non Conductive Tape Measure	1

# ADVENT®

## SERIES 1 The Black Edition

5m/16ft x 25mm Wide Blade  
8m/26ft x 25mm Wide Blade



# YOUR BRAND

## SERIES 1 The Black Edition

5m/16ft x 25mm Wide Blade  
8m/26ft x 25mm Wide Blade



### FEATURES

Class II Accurate/ UKCA + CE Approved  
Metric & Imperial Blade Markings  
Easy To Read Black & White Blade  
Nylon Coated Blade

Dual Printed Blade  
True Zero End Hook  
3 Rivet End Hook

### FEATURES

Class II Accurate/ UKCA + CE Approved  
Metric & Imperial Blade Markings  
Easy To Read Black & White Blade  
Nylon Coated Blade

Dual Printed Blade  
True Zero End Hook  
3 Rivet End Hook



ITEM CODE	DESCRIPTION	MOQ
ATM1-5025	Advent Branded 5m/16ft x 25mm Series 1 Tape Measure	6
ATM1-8025	Advent Branded 8m/26ft x 25mm Series 1 Tape Measure	6



ITEM CODE	DESCRIPTION	MOQ
ATM1-5025YB	Your Brand 5m/16ft x 25mm Series 1 Tape Measure	24
ATM1-8025YB	Your Brand 8m/26ft x 25mm Series 1 Tape Measure	24



# ADVENT®

## SERIES 2 The Rugged One

5m/16ft x 25mm Wide Blade  
8m/26ft x 25mm Wide Blade



# YOUR BRAND

## SERIES 2 The Rugged One

5m/16ft x 25mm Wide Blade  
8m/26ft x 25mm Wide Blade



### FEATURES

Class II Accurate/ UKCA + CE Approved  
Metric & Imperial Blade Markings  
ABS Heavy Duty Case  
Non-Reflective Blade

True Zero End Hook  
Thick Rubber Grip  
3 Rivet End Hook

### FEATURES

Class II Accurate/ UKCA + CE Approved  
Metric & Imperial Blade Markings  
ABS Heavy Duty Case  
Non-Reflective Blade

True Zero End Hook  
Thick Rubber Grip  
3 Rivet End Hook



ITEM CODE	DESCRIPTION	MOQ
ATM2-5025	Advent Branded 5m/16ft x 25mm Series 2 Tape Measure	12
ATM2-8025	Advent Branded 8m/26ft x 25mm Series 2 Tape Measure	12



ITEM CODE	DESCRIPTION	MOQ
ATM2-5025YB	Your Brand 5m/16ft x 25mm Series 2 Tape Measure	72
ATM2-8025YB	Your Brand 8m/26ft x 25mm Series 2 Tape Measure	48

# ADVENT®

**SERIES 4**  
**The Original One**

3m/10ft x 16mm Wide Blade



# YOUR BRAND

**SERIES 4**  
**The Original One**

3m/10ft x 16mm Wide Blade



## FEATURES

Class II Accurate/ UKCA + CE Approved  
Metric & Imperial Blade Markings  
Blade Lock + Pause Button  
ABS Heavy Duty Case

Non-Reflective Blade  
True Zero End Hook  
Thick Rubber Grip  
3 Rivet End Hook

## FEATURES

Class II Accurate/ UKCA + CE Approved  
Metric & Imperial Blade Markings  
Blade Lock + Pause Button  
ABS Heavy Duty Case

Non-Reflective Blade  
True Zero End Hook  
Thick Rubber Grip  
3 Rivet End Hook



ITEM CODE	DESCRIPTION	MOQ
ATM4-3016	Advent Branded 3m/10ft x 16mm Series 4 Tape Measure	12



ITEM CODE	DESCRIPTION	MOQ
ATM4-3016YB	Your Brand 3m/10ft x 16mm Series 4 Tape Measure	120



# ADVENT®

## SERIES 4 The Original One

5m/16ft x 19mm Wide Blade



# YOUR BRAND

## SERIES 4 The Original One

5m/16ft x 19mm Wide Blade



### FEATURES

Class II Accurate/ UKCA + CE Approved  
Metric & Imperial Blade Markings  
Blade Lock + Pause Button  
ABS Heavy Duty Case

Non-Reflective Blade  
True Zero End Hook  
Thick Rubber Grip  
3 Rivet End Hook

### FEATURES

Class II Accurate/ UKCA + CE Approved  
Metric & Imperial Blade Markings  
Blade Lock + Pause Button  
ABS Heavy Duty Case

Non-Reflective Blade  
True Zero End Hook  
Thick Rubber Grip  
3 Rivet End Hook



ITEM CODE	DESCRIPTION	MOQ
ATM4-5019	Advent Branded 5m/16ft x 19mm Series 4 Tape Measure	12



ITEM CODE	DESCRIPTION	MOQ
ATM4-5019YB	Your Brand 5m/16ft x 19mm Series 4 Tape Measure	120

# ADVENT®

## SERIES 4 - QUANTUM

5m/16ft x 25mm Wide Blade



5 COLOURWAYS

# YOUR BRAND

## SERIES 4 - QUANTUM

5m/16ft x 25mm Wide Blade



5 COLOURWAYS

### FEATURES

- Class II Accurate/ UKCA + CE Approved
- Metric & Imperial Blade Markings
- Blade Lock + Pause Button
- ABS Heavy Duty Case

- Non-Reflective Blade
- True Zero End Hook
- Thick Rubber Grip
- 3 Rivet End Hook



### FEATURES

- Class II Accurate/ UKCA + CE Approved
- Metric & Imperial Blade Markings
- Blade Lock + Pause Button
- ABS Heavy Duty Case

- Non-Reflective Blade
- True Zero End Hook
- Thick Rubber Grip
- 3 Rivet End Hook



ITEM CODE	DESCRIPTION	MOQ
ATM4-5025B	Blue & White Advent 5m/16ft x 25mm Series 4 Tape Measure	12
ATM4-5025BT	All Black Advent 5m/16ft x 25mm Series 4 Tape Measure	12
ATM4-5025	Black & Yellow Advent 5m/16ft x 25mm Series 4 Tape Measure	12
ATM4-50250	Black & Orange Advent 5m/16ft x 25mm Series 4 Tape Measure	12
ATM4-5025LE	Red & White Advent 5m/16ft x 25mm Series 4 Tape Measure	12

ITEM CODE	DESCRIPTION	MOQ
ATM4-5025BYB	Blue & White Your Brand 5m/16ft x 25mm Series 4 Tape Measure	72
ATM4-5025YB	Black & Yellow Your Brand 5m/16ft x 25mm Series 4 Tape Measure	72
ATM4- 5025BTYB	All Black Your Brand 5m/16ft x 25mm Series 4 Tape Measure	72
ATM4-50250YB	Black & Orange Your Brand 5m/16ft x 25mm Series 4 Tape Measure	72
ATM4-5025LEYB	Red & White Your Brand 5m/16ft x 25mm Series 4 Tape Measure	72



# ADVENT®

## SERIES 4 - QUANTUM

8m/26ft x 25mm Wide Blade



5 COLOURWAYS

# YOUR BRAND

## SERIES 4 - QUANTUM

8m/26ft x 25mm Wide Blade



5 COLOURWAYS

### FEATURES

- Class II Accurate/ UKCA + CE Approved
- Metric & Imperial Blade Markings
- Blade Lock + Pause Button
- ABS Heavy Duty Case

- Non-Reflective Blade
- True Zero End Hook
- Thick Rubber Grip
- 3 Rivet End Hook



### FEATURES

- Class II Accurate/ UKCA + CE Approved
- Metric & Imperial Blade Markings
- Blade Lock + Pause Button
- ABS Heavy Duty Case

- Non-Reflective Blade
- True Zero End Hook
- Thick Rubber Grip
- 3 Rivet End Hook



ITEM CODE	DESCRIPTION	MOQ
ATM4-8025	Black & Yellow Advent 8m/26ft x 25mm Series 4 Tape Measure	12
ATM4-80250	Black & Orange Advent 8m/26ft x 25mm Series 4 Tape Measure	12
ATM4-8025BT	All Black Advent 8m/26ft x 25mm Series 4 Tape Measure	12
ATM4-8025B	Blue & White Advent 8m/26ft x 25mm Series 4 Tape Measure	12
ATM4-8025LE	Red & White Advent 8m/26ft x 25mm Series 4 Tape Measure	12

ITEM CODE	DESCRIPTION	MOQ
ATM4-8025YB	Black & Yellow Your Brand 8m/26ft x 25mm Series 4 Tape Measure	48
ATM4-80250YB	Black & Orange Your Brand 8m/26ft x 25mm Series 4 Tape Measure	48
ATM4-8025BTYB	All Black Your Brand 8m/26ft x 25mm Series 4 Tape Measure	48
ATM4-8025BYB	Blue & White Your Brand 8m/26ft x 25mm Series 4 Tape Measure	48
ATM4-8025LEYB	Red & White Your Brand 8m/26ft x 25mm Series 4 Tape Measure	48

# ADVENT®

## SERIES 4 - QUANTUM

10m/33ft x 25mm Wide Blade



# YOUR BRAND

## SERIES 4 - QUANTUM

10m/33ft x 25mm Wide Blade



### FEATURES

- Class II Accurate/ UKCA + CE Approved
- Metric & Imperial Blade Markings
- Blade Lock + Pause Button
- ABS Heavy Duty Case

- Non-Reflective Blade
- True Zero End Hook
- Thick Rubber Grip
- 3 Rivet End Hook

### FEATURES

- Class II Accurate/ UKCA + CE Approved
- Metric & Imperial Blade Markings
- Blade Lock + Pause Button
- ABS Heavy Duty Case

- Non-Reflective Blade
- True Zero End Hook
- Thick Rubber Grip
- 3 Rivet End Hook



ITEM CODE	DESCRIPTION	MOQ
ATM4-10025	Advent Branded 10m/33ft x 25mm Series 4 Tape Measure	12



ITEM CODE	DESCRIPTION	MOQ
ATM4-10025YB	Your Brand 10m/33ft x 25mm Series 4 Tape Measure	48



# ADVENT®

## SERIES 4 - The Dual

5m/16ft x 25mm Wide Blade

8m/26ft x 25mm Wide Blade



# YOUR BRAND

## SERIES 4 - The Dual

5m/16ft x 25mm Wide Blade

8m/26ft x 25mm Wide Blade



### FEATURES

Class II Accurate/ UKCA + CE Approved

Metric & Imperial Blade Markings

Dual Printed Blade Markings

Blade Lock + Pause Button

ABS Heavy Duty Case

Non-Reflective Blade

True Zero End Hook

Thick Rubber Grip

3 Rivet End Hook



### FEATURES

Class II Accurate/ UKCA + CE Approved

Metric & Imperial Blade Markings

Dual Printed Blade Markings

Blade Lock + Pause Button

ABS Heavy Duty Case

Non-Reflective Blade

True Zero End Hook

Thick Rubber Grip

3 Rivet End Hook



ITEM CODE	DESCRIPTION	MOQ
ATM4-5025D	Advent Branded 5m/16ft x 25mm Series 4 Dual Blade Tape Measure	12
ATM4-8025D	Advent Branded 8m/26ft x 25mm Series 4 Dual Blade Tape Measure	12



ITEM CODE	DESCRIPTION	MOQ
ATM4-5025DYB	Your Brand 5m/16ft x 25mm Series 4 Dual Blade Tape Measure	72
ATM4-8025DYB	Your Brand 8m/26ft x 25mm Series 4 Dual Blade Tape Measure	48

# ADVENT®

## SERIES 7 The Self Locking One

5m/16ft x 25mm Wide Blade  
8m/26ft x 25mm Wide Blade



# YOUR BRAND

## SERIES 7 The Self Locking One

5m/16ft x 25mm Wide Blade  
8m/26ft x 25mm Wide Blade



### FEATURES

Class II Accurate/ UKCA + CE Approved  
Metric & Imperial Blade Markings  
Magnetic/ 3 Rivet End Hook  
Automatic Blade Lock

Non-Reflective Blade  
True Zero End Hook  
Thick Rubber Grip  
ABS Plastic Case

### FEATURES

Class II Accurate/ UKCA + CE Approved  
Metric & Imperial Blade Markings  
Magnetic/ 3 Rivet End Hook  
Automatic Blade Lock

Non-Reflective Blade  
True Zero End Hook  
Thick Rubber Grip  
ABS Plastic Case



ITEM CODE	DESCRIPTION	MOQ
ATM7-5025	Advent Branded 5m/16ft x 25mm Series 7 Tape Measure	12
ATM7-8025	Advent Branded 8m/26ft x 25mm Series 7 Tape Measure	12



ITEM CODE	DESCRIPTION	MOQ
ATM7-5025YB	Your Brand 5m/16ft x 25mm Series 7 Tape Measure	72
ATM7-8025YB	Your Brand 8m/26ft x 25mm Series 7 Tape Measure	48



# ADVENT®

## Hi-Vis The Easy to Find One

5m/16ft x 19mm Wide Blade  
8m/26ft x 25mm Wide Blade



# YOUR BRAND

## Hi-Vis The Easy to Find One

5m/16ft x 19mm Wide Blade  
8m/26ft x 25mm Wide Blade



### FEATURES

Class II Accurate/ UKCA + CE Approved  
Metric & Imperial Blade Markings  
Ergonomic Soft Rubber Case  
Blade Lock + Pause Button

Hi-Visibility Green Case  
True Zero End Hook  
3 Rivet End Hook

### FEATURES

Class II Accurate/ UKCA + CE Approved  
Metric & Imperial Blade Markings  
Ergonomic Soft Rubber Case  
Blade Lock + Pause Button

Hi-Visibility Green Case  
True Zero End Hook  
3 Rivet End Hook



ITEM CODE	DESCRIPTION	MOQ
AHV-5019	Advent Branded 5m/16ft x 19mm Hi-Vis Tape Measure	12
AHV-8025	Advent Branded 8m/26ft x 25mm Hi-Vis Tape Measure	12



ITEM CODE	DESCRIPTION	MOQ
AHV-5019YB	Your Brand 5m/16ft x 19mm Hi-Vis Tape Measure	120
AHV-8025YB	Your Brand 8m/26ft x 25mm Hi-Vis Tape Measure	72

# ADVENT®

POS

Advent Backing Cards



## FEATURES

- Matt Black Finish For Stylish Look
- Made From Recyclable Card
- Euro Hanging Slot

# YOUR BRAND

POS

Your Brand Backing Cards



## FEATURES

- Matt Black Finish For Stylish Look
- Made From Recyclable Card
- Euro Hanging Slot



ITEM CODE	DESCRIPTION	MOQ
PBC1	Advent - Cardboard Backing Card (Euro Hanging Slot)	12



ITEM CODE	DESCRIPTION	MOQ
PBC1YB	Your Brand - Cardboard Backing Card (Euro Hanging Slot)	12



# ADVENT®

**POS**

Advent Counter Display Tray  
Your Brand Counter Display Tray



# YOUR BRAND

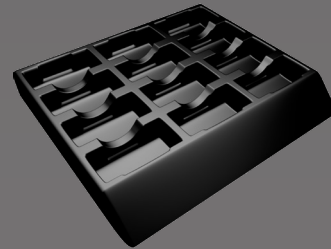
**POWERBLADE KEY RING**

2m/6ft/13mm Wide Blade



## FEATURES

- Counter Display Tray For 12 Tapes
- Black Finish To Suit Any Logo
- Made From Recyclable Card



## FEATURES

- Class II Accurate/ UKCA + CE Approved
- Metric & Imperial Blade Markings
- ABS Case For Impact Resistance
- Key Chain With Snap On Hook

- Extra Heat Treated End Hook
- Moulded Rubber Grip
- True Zero End Hook
- 1.2m Standout



ITEM CODE	DESCRIPTION	MOQ
-----------	-------------	-----

CDT1	Advent - Cardboard Counter Display	1
CDT1YB	Your Brand - Cardboard Counter Display	1

ITEM CODE	DESCRIPTION	MOQ
-----------	-------------	-----

K87KYB	Your Brand - 2m/6ft PowerBlade Key Ring Tape Measure	120
--------	--	-----

# YOUR BRAND

## Long Fibreglass Tape Measure's

30m/100ft  
50m/165ft  
100m/330ft



# YOUR BRAND

## Long Steel Tape Measure's

30m/100ft  
50m/165ft



### FEATURES

Metric + Imperial Blade Markings  
(1 Side Metric, 1 Side Imperial)  
16,000 Strand Fibreglass Tape  
High-Speed Gear Mechanism

Class II Accurate/UKCA + CE Approved  
Double PVC Coated Blade  
2 Internal Steel Rollers

### FEATURES

Metric + Imperial Blade Markings  
(1 Side Metric, 1 Side Imperial)  
Steel Roller Guide + Claw End Hook  
High-Quality Carbon Steel Blade

Dura NY Nylon Blade Protection  
Class II Accurate/UKCA + CE Approved  
Heavy Duty ABS Plastic Case  
High-Speed Gear Mechanism

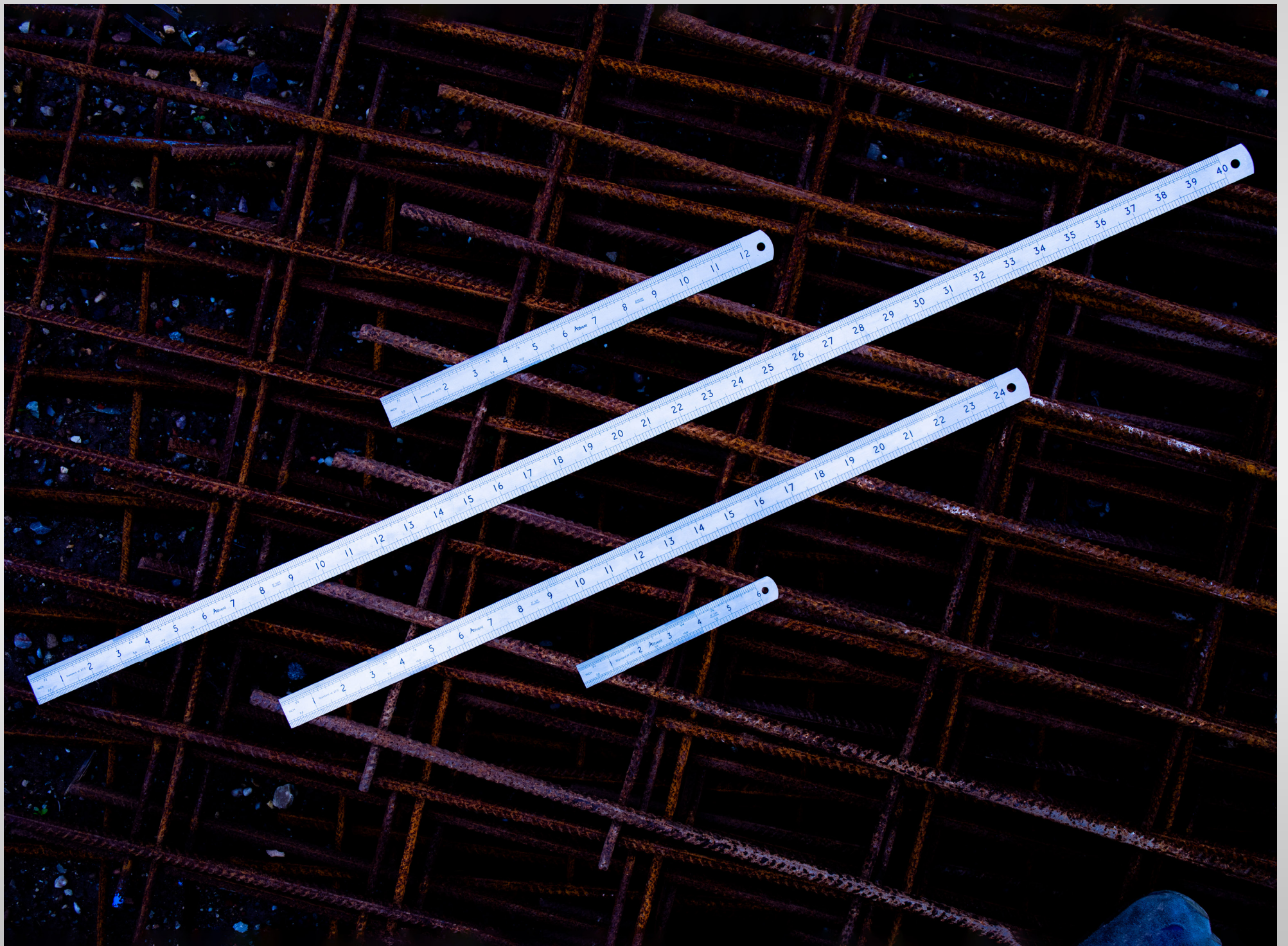


ITEM CODE	DESCRIPTION	MOQ
FU30E/EYB	Your Brand 30m/100ft Fibreglass Tape Measure	5
FU50E/EYB	Your Brand 50m/165ft Fibreglass Tape Measure	5
FU100E/EYB	Your Brand 100m/330ft Fibreglass Tape Measure	5



ITEM CODE	DESCRIPTION	MOQ
LU30E/EYB	Your Brand 30m/100ft Steel Tape Measure	5
LU50E/EYB	Your Brand 50m/165ft Steel Tape Measure	5



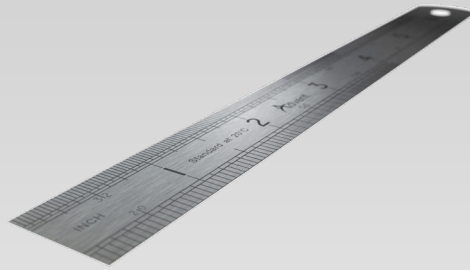




# ADVENT®

## Advent Steel Rules

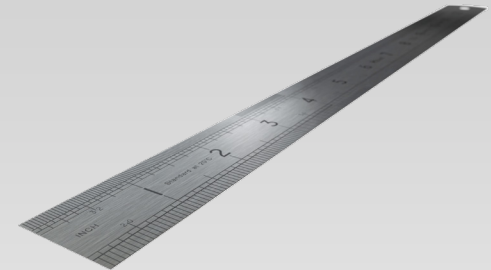
6"/ 150mm x 19mm Wide  
12"/ 300mm x 25mm Wide



# ADVENT®

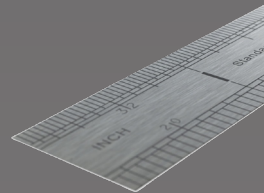
## Advent Steel Rules

24"/ 600mm x 25mm Wide  
1m/ 1000mm x 25mm Wide



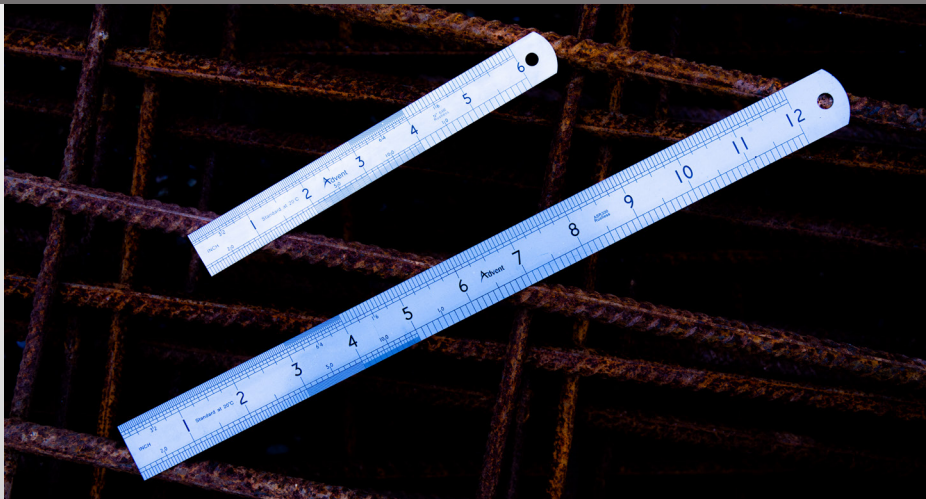
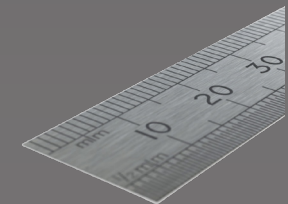
### FEATURES

- Etched Metric & Imperial Blade Markings
- Rust Proof
- Class II Accurate/ UKCA + CE Approved
- Supplied In Plastic Hanging Sleeve
- Stainless Steel



### FEATURES

- Etched Metric & Imperial Blade Markings
- Rust Proof
- Class II Accurate/ UKCA + CE Approved
- Supplied In Plastic Hanging Sleeve
- Stainless Steel



ITEM CODE	DESCRIPTION	MOQ
ASR-150	Advent 6"/ 150mm x 19mm Precision Class II Steel Rule	10
ASR-300	Advent 12"/ 300mm x 25mm Precision Class II Steel Rule	10

ITEM CODE	DESCRIPTION	MOQ
ASR-600	Advent 24"/ 600mm x 25mm Precision Class II Steel Rule	10
ASR-1000	Advent 1m/ 1000mm x 25mm Precision Class II Steel Rule	10







# ADVENT®

## Advent Universal Sharpener 50's

Box of 50 Sharpeners



### FEATURES

- Supplied In Countertop Display Box
- Ergonomic Design
- Sharpens All Pencils & Crayons
- Individually Barcoded
- Comfortable To Use



ITEM CODE	DESCRIPTION	MOQ
-----------	-------------	-----

AUS	Advent - Universal Sharpener 50's	1
-----	-----------------------------------	---

# YOUR BRAND

## Carpenters Pencils

Wood Finish Hard Lead  
White Finish Medium Lead



### FEATURES

- Supplied In Countertop Display Box
- Individually Barcoded
- Full Colour Printing



ITEM CODE	DESCRIPTION	MOQ
-----------	-------------	-----

ACP-WOODYB	Your Brand Carpenters Pencils Hard Lead - Wood Finish	288
ACP-WHITEYB	Your Brand - Carpenters Pencils Medium Lead - White Finish	288

# ADVENT®

## Advent Carpenters Pencils + Sharpener Set

10 Piece Medium Lead Pencils +  
Sharpener Set



# ADVENT®

## Advent Hexagonal Pencils + Sharpener Set

15 Piece HB Lead Pencils +  
Sharpener Set



### FEATURES

- Supplied In Countertop Display Box
- Universal Sharpener Included
- Handy Storage Box
- Medium Lead



### FEATURES

- Supplied In Countertop Display Box
- Standard Pencil Sharpener Included
- Handy Storage Tube
- Eraser Top Pencils

- Wood Finish
- HB Lead



ITEM CODE	DESCRIPTION	MOQ
-----------	-------------	-----

ACPTUB10	Advent Carpenters Pencils 10 Piece Medium Lead Sharpener Set	12
----------	---	----

ITEM CODE	DESCRIPTION	MOQ
-----------	-------------	-----

ACPTUB15	Advent - Hexagonal Pencils 15 Piece HB Lead Sharpener Set	12
----------	--	----







# ADVENT®

## Advent Nylon Braided Hi - Vis Brick Line

Display Box of 24  
76m/ 250ft



# YOUR BRAND

## Nylon Braided Hi - Vis Brick Line

Display Box of 24  
76m/ 250ft



### FEATURES

Tough Twisted Nylon That Is Sag-Free  
Hi Visibility Nylon Braided Brick line  
Made For Brick & Block Laying  
Made For Landscape Layout  
3 x Mixed Hi - Vis Colours

Made For Staking Out  
Sturdy & Durable



### FEATURES

Tough Twisted Nylon That Is Sag-Free  
Hi Visibility Nylon Braided Brick line  
Made For Brick & Block Laying  
Made For Landscape Layout  
3 x Mixed Hi - Vis Colours

Made For Staking Out  
Sturdy & Durable



ITEM CODE	DESCRIPTION	MOQ
AHVBL24	Advent - Nylon Braided Hi-Vis Brick Line Display of 24 - 76m/250ft	1



ITEM CODE	DESCRIPTION	MOQ
AHVBL24YB	Your Brand - Nylon Braided Hi-Vis Brick Line Display of 24 - 76m/250ft	1

# ADVENT®

## Advent Reel Eazi Hi - Vis Brick Line

Display Box of 12  
76m/ 250ft



### FEATURES

- Tough Twisted Nylon That Is Sag-Free
- Hi Visibility Nylon Braided Brick line
- Made For Brick & Block Laying
- Unique Quick Wind Handle
- Made For Landscape Layout

- 3 x Mixed Hi - Vis Colours
- Made For Staking Out
- Sturdy & Durable

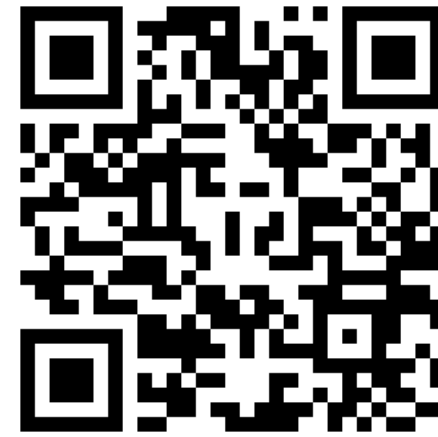


ITEM CODE	DESCRIPTION	MOQ
AHVBL-ER12	Advent - Reel Eazi Hi - Vis Brick Line	1

## CONTACT US

- ✉ sales@adventtools.co.uk
- ☎ 01675 777 100
- 📠 01675 777 101

[www.adventtools.co.uk](http://www.adventtools.co.uk)



- 🎵 @adventtoolsltd
- 📷 @adventtoolsltd
- 📘 @AdventToolsLtd
- 🌐 @advent-tools-limited
- 🐦 @adventtools



**ADVENT**<sup>®</sup>  
TOOLS LIMITED



**YOUR BRAND**<sup>®</sup>  
**ADVENT**



**THE PRODUCT GUIDE**  
EFFECTIVE 1ST JANUARY 2024